







NSG

DESIGN AND BUILD

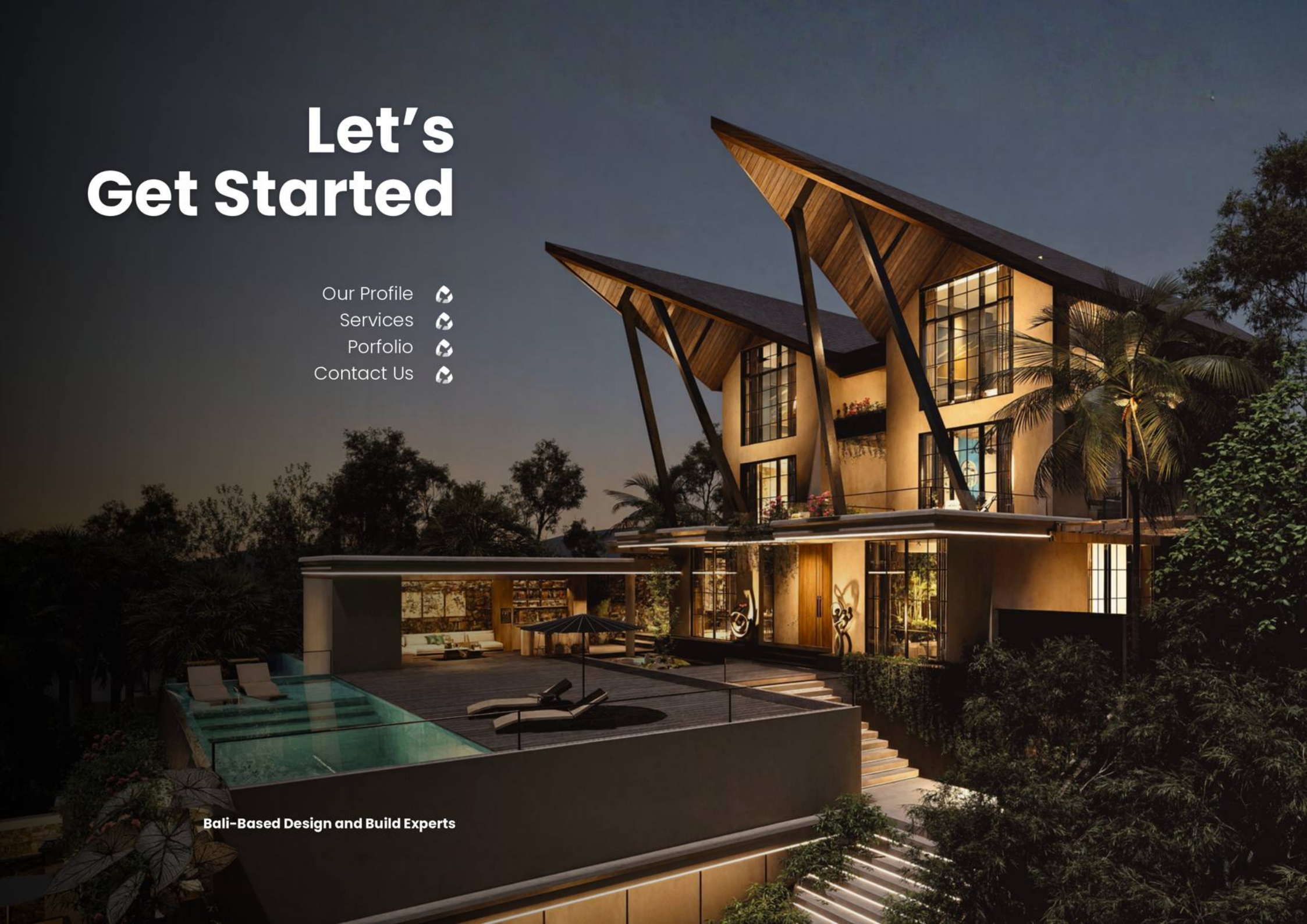
Delivering Luxury Villas, Resorts, and Multi-Unit Projects
With Excellence and End-to-End Service



Let's Get Started

Our Profile 
Services 
Portfolio 
Contact Us 

Bali-Based Design and Build Experts



OUR SERVICES

DESIGN

- Planning
- Architecture
- Interiors
- Engineering
- Landscape Design

BUILD

- Construction
- General Contractor
- Project Management

OUR BASE

BALI, INDONESIA

Jl. Bypass Ngurah Rai, Benoa,
Kec Kuta Selatan.

WHO WE ARE?

150+
Project
Delivered

Residential, hospitality, and multi-unit developments across Bali and internationally

100%
Sustainability
Certified

Residential, hospitality, and multi-unit developments across Bali and internationally

25+
Countries with
Trusted Clients

Trusted by international clients for projects in Bali and abroad

96%
On-Time
Completion

Disciplined in-house integration across all disciplines

NSG is a Bali Based Design And Build Company and partner in creating lasting spaces and investments. Based in Bali and serving clients internationally, our expertise spans villas, resorts, and large scale developments. What sets us apart is the integration of design, engineering, and construction under one roof, ensuring seamless collaboration and accountability at every stage.

We approach each project with a balance of creativity, precision, and financial clarity, aligning vision with build ability and long term value. Whether you are a developer, investor, or private client, our goal is the same: to deliver architecture and construction that inspire, perform, and endure.

Meet The Leadership

Local own, western managed

As a husband and wife team, we built NSG on the foundation of trust, family values, and a shared vision for excellence. With Indonesian ownership and western management, we bring together two perspectives, local heart and global precision.

Our approach is personal, our standards are high, and our commitment is genuine. Every project reflects not only our expertise but also our family's dedication to quality and integrity.

Ayu & Travis



BALI BASED DESIGN & BUILD EXPERTS

Our Process



**Initial
Conversation**



**Project
Discovery**



**Proposal +
Path Forward**



**Start Your
Project**

What We Do?

We provide complete services lineup including planning, architecture, interior design, engineering, landscape, construction, and project management. Whether it's a private villa, boutique resort, or multi-unit development, we take projects from concept to completion under one roof.

NSG Advantage

Our advantage is built on a balance of creativity, precision, and accountability. Every project is guided by principles that ensure your villa, resort, or development is designed and built beautifully.

Who We Design For?

We design for clients who demand more from their projects. Whether it's a private villa, a boutique resort, or a large-scale residential development, our work balances lifestyle, guest experience, and investment value.

Our Markets

We operate across three main markets: **residential, hospitality, and multi-unit developments**. These sectors form the core of our Design and Build work, ranging from private villas and luxury estates to hotels, resorts, and residential communities. Each market carries its own design, technical, and construction requirements, and our team is structured to meet the demands of all three with full in-house capabilities.

150+

Project
Delivered

25+

Countries with
Trusted Clients

96%

On-Time
Completion

We deliver Design & Build solutions that adapt to every market while meeting the highest professional standards.



Residential

- Luxury Estates
- Private Residences
- Villa



Hospitality

- Hotels
- Resorts
- F+B
- Beach Clubs
- Creative Spaces



Multi - Unit

- Villa Developments
- Apartments
- Townhouses

Our Approach

Integrated Thinking

Great projects come from collaboration, not silos. At NSG, architects, engineers, and builders work side by side, aligning creative vision with technical and financial realities. This integration reduces risk, improves efficiency, and ensures every decision supports the bigger picture.

Collaborative Process

We work closely with you at every stage, combining our expertise with your aspirations to create spaces that feel authentic, timeless, and aligned with your goals. This partnership ensures your villa, resort, or development reflects both refined simplicity and lasting value.

Delivery

- Clear milestones and progress tracking
- Disciplined budget control and reporting
- Proactive coordination to prevent delays
- Accountability from concept to completion

Transparency

- Straightforward communication at every stage
- Detailed reporting for costs and progress
- Defined responsibilities for all stakeholders
- No hidden surprises or last-minute changes

Integration

- Unified design and build team under one roof
- Seamless handoff from drawings to construction
- Fewer conflicts between consultants and contractors
- Decisions made with the full project in view

Quality

- Strict material and workmanship standards
- Regular site inspections and reviews
- Alignment with international codes and practices
- Villas and resorts built to endure Bali's climate

Client

- Personalized solutions for villas, resorts, or developments
- Designs aligned with ROI, guest experience, or lifestyle
- Flexible processes to meet unique client needs
- Long-term value as the guiding principle

Core Pillars Of Design & Build

We carry the design through to delivery – ensuring it's built as intended, beautifully and precisely. From final drawings to move-in, we stay involved to protect the integrity of the vision and support clients every step of the way.

A high-end architectural rendering of a traditional East Asian courtyard at twilight. The scene is centered around a long, narrow pool of water that reflects the ambient light. At the far end of the pool stands a two-story pavilion with a dark, tiled roof and a small square lantern on top. The pavilion's interior is warmly lit, and a large, framed piece of traditional art is visible on its front wall. On either side of the pool, there are stone planters containing lush green trees with small, light-colored blossoms. In the foreground, the curved edges of stone steps or a low wall are visible, framing the view of the courtyard. The overall atmosphere is peaceful and elegant, showcasing sophisticated landscape and building design.

DESIGN SERVICE



OUR BALI DESIGN SERVICE

We are a Bali-based, globally minded design practice for luxury residential, hospitality and multi-unit development projects.

Our Advantage

Design
Expertise

Transparency

Integrated
Team

Predictable
Delivery

Sustainable
by Design

Vision Driven
Progress

Planning

- Site study & Analysis
- Spatial Programming
- Massing & Zoning
- Concept Master Planning
- Estimations & Budgeting
- Timeline & Phasing

Architectural Design

- Concept Design
- Floor Plan
- Sections & Elevations
- 3D massing
- Design Visualisation
- Materials Selections

Interior Design

- Interior Layout
- Material Selection
- FF&E
- Visual Moodboard
- Sample Palettes
- Details & Specifications

Engineering

- Mechanical Design
- Electrical Design
- Plumbing Design
- Structural Analysis
- Structural Design
- Technical Specifications

Landscape Design

- Planting Schedule
- Circulation & access flow
- Outdoor spatial zoning
- Hardscape
- Softscape
- Drainage + Irrigation



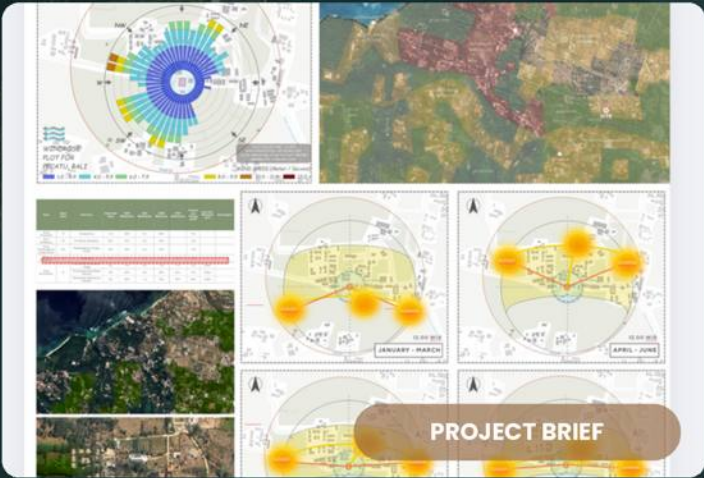
OUR DESIGN DELIVERY

Our delivery process ensures that every project, from luxury villas to boutique resorts and multi-unit developments, moves seamlessly from vision to reality. We combine international standards with local expertise to manage each stage of design and construction with precision. By aligning documentation, pricing, and execution, we provide our clients with transparency, predictable timelines, and confidence that their investment will achieve the desired outcome.

-  **SCHEMATIC DESIGN**
-  **DESIGN DEVELOPMENT**
-  **DOCUMENTATION**
-  **BIDDING**
-  **CA**

SCHEMATIC DESIGN

We begin by exploring the project vision and goals, translating them into initial sketches, diagrams, and spatial concepts. This phase captures the project's character and establishes the foundation for design direction. We review options for layout, massing, and scale, ensuring the design reflects the client's needs, site opportunities, and budget. The result is a clear conceptual framework that guides all future phases.



No	Item	Description	Value	Paid To Date	Pay Remaining
OUTDOOR AREA					
1.	BOUNDARY AREA	LABOUR + MATERIAL	Rp 4.969.300,00	Rp -	Rp 4.969.300,00
2.	CARPORT	LABOUR + MATERIAL	Rp 500.000,00	Rp -	Rp 500.000,00
3.	LAUNDRY	LABOUR + MATERIAL	Rp 673.920,45	Rp -	Rp 673.920,45
4.	BEHIND KITCHEN	LABOUR + MATERIAL	Rp 1.316.000,00	Rp -	Rp 1.316.000,00
5.	FAÇADE	LABOUR + MATERIAL	Rp 200.000,00	Rp -	Rp 200.000,00
6.	GARDEN + PATHWAYS	LABOUR + MATERIAL	Rp 1.081.500,00	Rp -	Rp 1.081.500,00
WOOD BEAM					
1.	GROUND FLOOR	LABOUR + MATERIAL	Rp 850.000,00	Rp -	Rp 850.000,00
2.	FIRST FLOOR	LABOUR + MATERIAL	Rp 850.000,00	Rp -	Rp 850.000,00
OVERHANG ROOF					
1.	ROOF SERVICE	LABOUR + MATERIAL	Rp 500.000,00	Rp -	Rp 500.000,00
2.	CEILING WOOD	LABOUR + MATERIAL	Rp 1.065.000,00	Rp -	Rp 1.065.000,00
KISI-KISI					
1.	MASTER BATHROOM	LABOUR + MATERIAL	Rp 456.000,00	Rp -	Rp 456.000,00
2.	STAIRS	LABOUR + MATERIAL	Rp 1.156.000,00	Rp -	Rp 1.156.000,00
3.	PANTRY	LABOUR + MATERIAL	Rp 1.936.000,00	Rp -	Rp 1.936.000,00
4.	BATHROOM 1	LABOUR + MATERIAL	Rp 3.224.000,00	Rp -	Rp 3.224.000,00
5.	SUNKEN	LABOUR + MATERIAL	Rp 780.000,00	Rp -	Rp 780.000,00
6.	BALCONY	LABOUR + MATERIAL	Rp 1.560.000,00	Rp -	Rp 1.560.000,00
OTHER					
1.	TRIANGLE ROOF GRACE BEDROOM	LABOUR + MATERIAL	Rp 293.200,00	Rp -	Rp 293.200,00
2.	HANGING CHAIR	LABOUR + MATERIAL	Rp 100.000,00	Rp -	Rp 100.000,00
DOOR WINDOW					
DOOR REPAIR (5 unit)			Rp 5.000.000,00	Rp -	Rp 5.000.000,00
PIB 1			Rp 6.096.383,20	Rp -	Rp 6.096.383,20

DESIGN DEVELOPMENT

With the approved schematic, the design is refined into greater detail. Floor plans, elevations, and sections evolve into coordinated layouts, integrating structure, systems, and materials. We collaborate closely with the client to confirm selections and adjust where needed. This phase solidifies both the aesthetic and technical intent, ensuring the project can move confidently toward documentation while aligning with performance, cost, and functional expectations.



3D MODELING INTERIOR



WALKTHROUGH VIDEO



3D MODELING EXTERIOR

ITEMS	INCLUSION		UNIT	AREA/UNIT	PRICE/UNIT	COST	
BUILDING AREA							
STRUCTURE	ALLOWANCE	% TOTAL		80%	Rp.	4,000,000	Rp. 10,916,520.00
ARCHITECTURE	ALLOWANCE	% TOTAL		35%	Rp.	3,500,000	Rp. 9,551,955.00
LANDSCAPE	ALLOWANCE	% TOTAL		25%	Rp.	2,500,000	Rp. 6,822,825.00
TOTALS				100%	Rp.	10,000,000	Rp. 27,291,300.00
OTHER AREA							
POOL	ALLOWANCE	M2		223	Rp.	4,000,000	Rp. 893,240.00
OUTDOOR AREA (TERRACE + PORCH STAIRS, HALLWAY, ROSSCAPE)	ALLOWANCE	M2			Rp.	2,000,000	Rp.
ROCKING AREA (PAVEMENT)	ALLOWANCE	M2		455	Rp.	3,500,000	Rp. 1,591,450.00
INDOOR	ALLOWANCE	M2			Rp.	7,500,000	Rp.
LANDSCAPE	ALLOWANCE	M2		94	Rp.	2,000,000	Rp. 188,640.00
TOTALS				772	Rp.	19,500,000	Rp. 2,871,330.00
OTHER ITEMS							
FINITURE	ALLOWANCE	% OF BUILDING COST		15%	Rp.	4,093,695,000	Rp. 4,093,695.00
KITCHEN APPLIANCES	ALLOWANCE	% OF BUILDING COST		3.5%	Rp.	955,195,500	Rp. 955,195.50
MECHANICAL ACCESSORIES	ALLOWANCE	% OF BUILDING COST		3.0%	Rp.	818,739,000	Rp. 818,739.00
TOTALS						Rp.	5,867,629.50
TOTALS SUMMARY							
	SECTION A	M2 (TOTAL)		2729	Rp.	10,000,000	Rp. 27,291,300.00
	SECTION B	M2 (AVG)		772	Rp.	3,461,383	Rp. 2,672,187.70
TOTAL BUILDING (WITHOUT OTHER ITEMS)				3501	Rp.	8,558,233	Rp. 29,963,487.70
	SECTION C	All					5,867,629.50
GRAND TOTAL							35,831,117.20

Final cost depends on completed building plans, final selections, and final approvals.

Prices are based on assumptions made for current industry standard pricing and build standards covered by client.

DETAILED PROJECT ESTIMATE

DETAILED PROJECT ESTIMATE

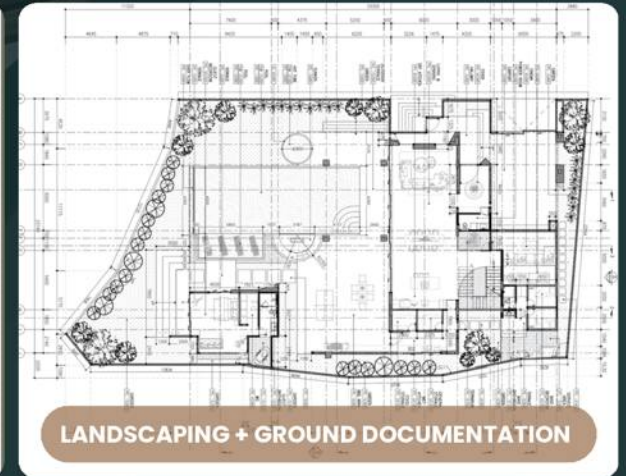
Total cost depends on completed building plans, final selections, technical specifications, and build standard issued by client. Allowances are based assumptions made for current industry standard pricing and build standard issued by client. Profit and Overhead are added to SUMMARY breakdown.

CONSTRUCTION DOCUMENTATION

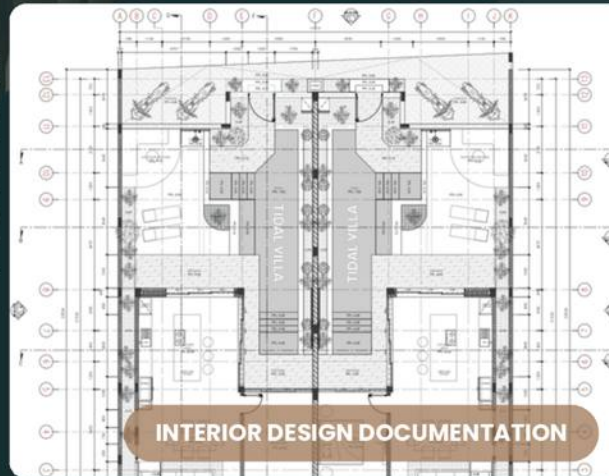
The design is translated into a comprehensive technical set that contractors can build from. Drawings and specifications detail every aspect of construction, including dimensions, assemblies, finishes, and systems coordination. This phase ensures clarity and precision so that bids, permits, and construction proceed without ambiguity. Thorough documentation provides the roadmap for turning design intent into reality while meeting regulatory requirements and maintaining quality assurance.

NO.	DWG NO.	DRAWING TITLE	SCALE	NO.	DWG NO.	DRAWING TITLE	SCALE	NO.	DWG NO.	DRAWING TITLE	SCALE
1	001	GENERAL NOTES	1/8" = 1'-0"	1	001	GENERAL NOTES	1/8" = 1'-0"	1	001	GENERAL NOTES	1/8" = 1'-0"
2	002	GENERAL NOTES	1/8" = 1'-0"	2	002	GENERAL NOTES	1/8" = 1'-0"	2	002	GENERAL NOTES	1/8" = 1'-0"
3	003	GENERAL NOTES	1/8" = 1'-0"	3	003	GENERAL NOTES	1/8" = 1'-0"	3	003	GENERAL NOTES	1/8" = 1'-0"
4	004	GENERAL NOTES	1/8" = 1'-0"	4	004	GENERAL NOTES	1/8" = 1'-0"	4	004	GENERAL NOTES	1/8" = 1'-0"
5	005	GENERAL NOTES	1/8" = 1'-0"	5	005	GENERAL NOTES	1/8" = 1'-0"	5	005	GENERAL NOTES	1/8" = 1'-0"
6	006	GENERAL NOTES	1/8" = 1'-0"	6	006	GENERAL NOTES	1/8" = 1'-0"	6	006	GENERAL NOTES	1/8" = 1'-0"
7	007	GENERAL NOTES	1/8" = 1'-0"	7	007	GENERAL NOTES	1/8" = 1'-0"	7	007	GENERAL NOTES	1/8" = 1'-0"
8	008	GENERAL NOTES	1/8" = 1'-0"	8	008	GENERAL NOTES	1/8" = 1'-0"	8	008	GENERAL NOTES	1/8" = 1'-0"
9	009	GENERAL NOTES	1/8" = 1'-0"	9	009	GENERAL NOTES	1/8" = 1'-0"	9	009	GENERAL NOTES	1/8" = 1'-0"
10	010	GENERAL NOTES	1/8" = 1'-0"	10	010	GENERAL NOTES	1/8" = 1'-0"	10	010	GENERAL NOTES	1/8" = 1'-0"
11	011	GENERAL NOTES	1/8" = 1'-0"	11	011	GENERAL NOTES	1/8" = 1'-0"	11	011	GENERAL NOTES	1/8" = 1'-0"
12	012	GENERAL NOTES	1/8" = 1'-0"	12	012	GENERAL NOTES	1/8" = 1'-0"	12	012	GENERAL NOTES	1/8" = 1'-0"
13	013	GENERAL NOTES	1/8" = 1'-0"	13	013	GENERAL NOTES	1/8" = 1'-0"	13	013	GENERAL NOTES	1/8" = 1'-0"
14	014	GENERAL NOTES	1/8" = 1'-0"	14	014	GENERAL NOTES	1/8" = 1'-0"	14	014	GENERAL NOTES	1/8" = 1'-0"
15	015	GENERAL NOTES	1/8" = 1'-0"	15	015	GENERAL NOTES	1/8" = 1'-0"	15	015	GENERAL NOTES	1/8" = 1'-0"
16	016	GENERAL NOTES	1/8" = 1'-0"	16	016	GENERAL NOTES	1/8" = 1'-0"	16	016	GENERAL NOTES	1/8" = 1'-0"
17	017	GENERAL NOTES	1/8" = 1'-0"	17	017	GENERAL NOTES	1/8" = 1'-0"	17	017	GENERAL NOTES	1/8" = 1'-0"
18	018	GENERAL NOTES	1/8" = 1'-0"	18	018	GENERAL NOTES	1/8" = 1'-0"	18	018	GENERAL NOTES	1/8" = 1'-0"
19	019	GENERAL NOTES	1/8" = 1'-0"	19	019	GENERAL NOTES	1/8" = 1'-0"	19	019	GENERAL NOTES	1/8" = 1'-0"
20	020	GENERAL NOTES	1/8" = 1'-0"	20	020	GENERAL NOTES	1/8" = 1'-0"	20	020	GENERAL NOTES	1/8" = 1'-0"
21	021	GENERAL NOTES	1/8" = 1'-0"	21	021	GENERAL NOTES	1/8" = 1'-0"	21	021	GENERAL NOTES	1/8" = 1'-0"
22	022	GENERAL NOTES	1/8" = 1'-0"	22	022	GENERAL NOTES	1/8" = 1'-0"	22	022	GENERAL NOTES	1/8" = 1'-0"
23	023	GENERAL NOTES	1/8" = 1'-0"	23	023	GENERAL NOTES	1/8" = 1'-0"	23	023	GENERAL NOTES	1/8" = 1'-0"
24	024	GENERAL NOTES	1/8" = 1'-0"	24	024	GENERAL NOTES	1/8" = 1'-0"	24	024	GENERAL NOTES	1/8" = 1'-0"
25	025	GENERAL NOTES	1/8" = 1'-0"	25	025	GENERAL NOTES	1/8" = 1'-0"	25	025	GENERAL NOTES	1/8" = 1'-0"
26	026	GENERAL NOTES	1/8" = 1'-0"	26	026	GENERAL NOTES	1/8" = 1'-0"	26	026	GENERAL NOTES	1/8" = 1'-0"
27	027	GENERAL NOTES	1/8" = 1'-0"	27	027	GENERAL NOTES	1/8" = 1'-0"	27	027	GENERAL NOTES	1/8" = 1'-0"
28	028	GENERAL NOTES	1/8" = 1'-0"	28	028	GENERAL NOTES	1/8" = 1'-0"	28	028	GENERAL NOTES	1/8" = 1'-0"
29	029	GENERAL NOTES	1/8" = 1'-0"	29	029	GENERAL NOTES	1/8" = 1'-0"	29	029	GENERAL NOTES	1/8" = 1'-0"
30	030	GENERAL NOTES	1/8" = 1'-0"	30	030	GENERAL NOTES	1/8" = 1'-0"	30	030	GENERAL NOTES	1/8" = 1'-0"
31	031	GENERAL NOTES	1/8" = 1'-0"	31	031	GENERAL NOTES	1/8" = 1'-0"	31	031	GENERAL NOTES	1/8" = 1'-0"
32	032	GENERAL NOTES	1/8" = 1'-0"	32	032	GENERAL NOTES	1/8" = 1'-0"	32	032	GENERAL NOTES	1/8" = 1'-0"
33	033	GENERAL NOTES	1/8" = 1'-0"	33	033	GENERAL NOTES	1/8" = 1'-0"	33	033	GENERAL NOTES	1/8" = 1'-0"
34	034	GENERAL NOTES	1/8" = 1'-0"	34	034	GENERAL NOTES	1/8" = 1'-0"	34	034	GENERAL NOTES	1/8" = 1'-0"
35	035	GENERAL NOTES	1/8" = 1'-0"	35	035	GENERAL NOTES	1/8" = 1'-0"	35	035	GENERAL NOTES	1/8" = 1'-0"
36	036	GENERAL NOTES	1/8" = 1'-0"	36	036	GENERAL NOTES	1/8" = 1'-0"	36	036	GENERAL NOTES	1/8" = 1'-0"
37	037	GENERAL NOTES	1/8" = 1'-0"	37	037	GENERAL NOTES	1/8" = 1'-0"	37	037	GENERAL NOTES	1/8" = 1'-0"
38	038	GENERAL NOTES	1/8" = 1'-0"	38	038	GENERAL NOTES	1/8" = 1'-0"	38	038	GENERAL NOTES	1/8" = 1'-0"
39	039	GENERAL NOTES	1/8" = 1'-0"	39	039	GENERAL NOTES	1/8" = 1'-0"	39	039	GENERAL NOTES	1/8" = 1'-0"
40	040	GENERAL NOTES	1/8" = 1'-0"	40	040	GENERAL NOTES	1/8" = 1'-0"	40	040	GENERAL NOTES	1/8" = 1'-0"
41	041	GENERAL NOTES	1/8" = 1'-0"	41	041	GENERAL NOTES	1/8" = 1'-0"	41	041	GENERAL NOTES	1/8" = 1'-0"
42	042	GENERAL NOTES	1/8" = 1'-0"	42	042	GENERAL NOTES	1/8" = 1'-0"	42	042	GENERAL NOTES	1/8" = 1'-0"
43	043	GENERAL NOTES	1/8" = 1'-0"	43	043	GENERAL NOTES	1/8" = 1'-0"	43	043	GENERAL NOTES	1/8" = 1'-0"
44	044	GENERAL NOTES	1/8" = 1'-0"	44	044	GENERAL NOTES	1/8" = 1'-0"	44	044	GENERAL NOTES	1/8" = 1'-0"
45	045	GENERAL NOTES	1/8" = 1'-0"	45	045	GENERAL NOTES	1/8" = 1'-0"	45	045	GENERAL NOTES	1/8" = 1'-0"
46	046	GENERAL NOTES	1/8" = 1'-0"	46	046	GENERAL NOTES	1/8" = 1'-0"	46	046	GENERAL NOTES	1/8" = 1'-0"
47	047	GENERAL NOTES	1/8" = 1'-0"	47	047	GENERAL NOTES	1/8" = 1'-0"	47	047	GENERAL NOTES	1/8" = 1'-0"
48	048	GENERAL NOTES	1/8" = 1'-0"	48	048	GENERAL NOTES	1/8" = 1'-0"	48	048	GENERAL NOTES	1/8" = 1'-0"
49	049	GENERAL NOTES	1/8" = 1'-0"	49	049	GENERAL NOTES	1/8" = 1'-0"	49	049	GENERAL NOTES	1/8" = 1'-0"
50	050	GENERAL NOTES	1/8" = 1'-0"	50	050	GENERAL NOTES	1/8" = 1'-0"	50	050	GENERAL NOTES	1/8" = 1'-0"
51	051	GENERAL NOTES	1/8" = 1'-0"	51	051	GENERAL NOTES	1/8" = 1'-0"	51	051	GENERAL NOTES	1/8" = 1'-0"
52	052	GENERAL NOTES	1/8" = 1'-0"	52	052	GENERAL NOTES	1/8" = 1'-0"	52	052	GENERAL NOTES	1/8" = 1'-0"
53	053	GENERAL NOTES	1/8" = 1'-0"	53	053	GENERAL NOTES	1/8" = 1'-0"	53	053	GENERAL NOTES	1/8" = 1'-0"
54	054	GENERAL NOTES	1/8" = 1'-0"	54	054	GENERAL NOTES	1/8" = 1'-0"	54	054	GENERAL NOTES	1/8" = 1'-0"
55	055	GENERAL NOTES	1/8" = 1'-0"	55	055	GENERAL NOTES	1/8" = 1'-0"	55	055	GENERAL NOTES	1/8" = 1'-0"
56	056	GENERAL NOTES	1/8" = 1'-0"	56	056	GENERAL NOTES	1/8" = 1'-0"	56	056	GENERAL NOTES	1/8" = 1'-0"
57	057	GENERAL NOTES	1/8" = 1'-0"	57	057	GENERAL NOTES	1/8" = 1'-0"	57	057	GENERAL NOTES	1/8" = 1'-0"
58	058	GENERAL NOTES	1/8" = 1'-0"	58	058	GENERAL NOTES	1/8" = 1'-0"	58	058	GENERAL NOTES	1/8" = 1'-0"
59	059	GENERAL NOTES	1/8" = 1'-0"	59	059	GENERAL NOTES	1/8" = 1'-0"	59	059	GENERAL NOTES	1/8" = 1'-0"
60	060	GENERAL NOTES	1/8" = 1'-0"	60	060	GENERAL NOTES	1/8" = 1'-0"	60	060	GENERAL NOTES	1/8" = 1'-0"
61	061	GENERAL NOTES	1/8" = 1'-0"	61	061	GENERAL NOTES	1/8" = 1'-0"	61	061	GENERAL NOTES	1/8" = 1'-0"
62	062	GENERAL NOTES	1/8" = 1'-0"	62	062	GENERAL NOTES	1/8" = 1'-0"	62	062	GENERAL NOTES	1/8" = 1'-0"
63	063	GENERAL NOTES	1/8" = 1'-0"	63	063	GENERAL NOTES	1/8" = 1'-0"	63	063	GENERAL NOTES	1/8" = 1'-0"
64	064	GENERAL NOTES	1/8" = 1'-0"	64	064	GENERAL NOTES	1/8" = 1'-0"	64	064	GENERAL NOTES	1/8" = 1'-0"
65	065	GENERAL NOTES	1/8" = 1'-0"	65	065	GENERAL NOTES	1/8" = 1'-0"	65	065	GENERAL NOTES	1/8" = 1'-0"
66	066	GENERAL NOTES	1/8" = 1'-0"	66	066	GENERAL NOTES	1/8" = 1'-0"	66	066	GENERAL NOTES	1/8" = 1'-0"
67	067	GENERAL NOTES	1/8" = 1'-0"	67	067	GENERAL NOTES	1/8" = 1'-0"	67	067	GENERAL NOTES	1/8" = 1'-0"
68	068	GENERAL NOTES	1/8" = 1'-0"	68	068	GENERAL NOTES	1/8" = 1'-0"	68	068	GENERAL NOTES	1/8" = 1'-0"
69	069	GENERAL NOTES	1/8" = 1'-0"	69	069	GENERAL NOTES	1/8" = 1'-0"	69	069	GENERAL NOTES	1/8" = 1'-0"
70	070	GENERAL NOTES	1/8" = 1'-0"	70	070	GENERAL NOTES	1/8" = 1'-0"	70	070	GENERAL NOTES	1/8" = 1'-0"
71	071	GENERAL NOTES	1/8" = 1'-0"	71	071	GENERAL NOTES	1/8" = 1'-0"	71	071	GENERAL NOTES	1/8" = 1'-0"
72	072	GENERAL NOTES	1/8" = 1'-0"	72	072	GENERAL NOTES	1/8" = 1'-0"	72	072	GENERAL NOTES	1/8" = 1'-0"
73	073	GENERAL NOTES	1/8" = 1'-0"	73	073	GENERAL NOTES	1/8" = 1'-0"	73	073	GENERAL NOTES	1/8" = 1'-0"
74	074	GENERAL NOTES	1/8" = 1'-0"	74	074	GENERAL NOTES	1/8" = 1'-0"	74	074	GENERAL NOTES	1/8" = 1'-0"
75	075	GENERAL NOTES	1/8" = 1'-0"	75	075	GENERAL NOTES	1/8" = 1'-0"	75	075	GENERAL NOTES	1/8" = 1'-0"
76	076	GENERAL NOTES	1/8" = 1'-0"	76	076	GENERAL NOTES	1/8" = 1'-0"	76	076	GENERAL NOTES	1/8" = 1'-0"
77	077	GENERAL NOTES	1/8" = 1'-0"	77	077	GENERAL NOTES	1/8" = 1'-0"	77	077	GENERAL NOTES	1/8" = 1'-0"
78	078	GENERAL NOTES	1/8" = 1'-0"	78	078	GENERAL NOTES	1/8" = 1'-0"	78	078	GENERAL NOTES	1/8" = 1'-0"
79	079	GENERAL NOTES	1/8" = 1'-0"	79	079	GENERAL NOTES	1/8" = 1'-0"	79	079	GENERAL NOTES	1/8" = 1'-0"
80	080	GENERAL NOTES	1/8" = 1'-0"	80	080	GENERAL NOTES	1/8" = 1'-0"	80	080	GENERAL NOTES	1/8" = 1'-0"
81	081	GENERAL NOTES	1/8" = 1'-0"	81	081	GENERAL NOTES	1/8" = 1'-0"	81	081	GENERAL NOTES	1/8" = 1'-0"
82	082	GENERAL NOTES	1/8" = 1'-0"	82	082	GENERAL NOTES	1/8" = 1'-0"	82	082	GENERAL NOTES	1/8" = 1'-0"
83	083	GENERAL NOTES	1/8" = 1'-0"	83	083	GENERAL NOTES	1/8" = 1'-0"	83	083	GENERAL NOTES	1/8" = 1'-0"
84	084	GENERAL NOTES	1/8" = 1'-0"	84	084	GENERAL NOTES	1/8" = 1'-0"	84	084	GENERAL NOTES	1/8" = 1'-0"
85	085	GENERAL NOTES	1/8" = 1'-0"	85	085	GENERAL NOTES	1/8" = 1'-0"	85	085	GENERAL NOTES	1/8" = 1'-0"
86	086	GENERAL NOTES	1/8" = 1'-0"	86	086	GENERAL NOTES	1/8" = 1'-0"	86	086	GENERAL NOTES	1/8" = 1'-0"
87	087	GENERAL NOTES	1/8" = 1'-0"	87	087	GENERAL NOTES	1/8" = 1'-0"	87	087	GENERAL NOTES	1/8" = 1'-0"
88	088	GENERAL NOTES	1/8" = 1'-0"	88	088	GENERAL NOTES	1/8" = 1'-0"	88	088	GENERAL NOTES	1/8" = 1'-0"
89	089	GENERAL NOTES	1/8" = 1'-0"	89	089	GENERAL NOTES	1/8" = 1'-0"	89	089	GENERAL NOTES	1/8" = 1'-0"
90	090	GENERAL NOTES	1/8" = 1'-0"	90	090	GENERAL NOTES	1/8" = 1'-0"	90	090	GENERAL NOTES	1/8" = 1'-0"
91	091	GENERAL NOTES	1/8" = 1'-0"	91	091	GENERAL NOTES	1/8" = 1'-0"	91	091	GENERAL NOTES	1/8" = 1'-0"
92	092	GENERAL NOTES	1/8" = 1'-0"	92	092	GENERAL NOTES	1/8" = 1'-0"	92	092	GENERAL NOTES	1/8" = 1'-0"
93	093	GENERAL NOTES	1/8" = 1'-0"	93	093	GENERAL NOTES	1/8" = 1'-0"	93	093	GENERAL NOTES	1/8" = 1'-0"
94	094	GENERAL NOTES	1/8" = 1'-0"	94	094	GENERAL NOTES	1/8" = 1'-0"	94	094	GENERAL NOTES	1/8" = 1'-0"
95	095	GENERAL NOTES	1/8" = 1'-0"	95	095	GENERAL NOTES	1/8" = 1'-0"	95	095	GENERAL NOTES	1/8" = 1'-0"
96	096	GENERAL NOTES	1/8" = 1'-0"	96	096	GENERAL NOTES	1/8" = 1'-0"	96	096	GENERAL NOTES	1/8" = 1'-0"
97	097	GENERAL NOTES	1/8" = 1'-0"	97	097	GENERAL NOTES	1/8" = 1'-0"	97	097	GENERAL NOTES	1/8" = 1'-0"
98	098	GENERAL NOTES	1/8" = 1'-0"	98	098	GENERAL NOTES	1/8" = 1'-0"	98	098	GENERAL NOTES	1/8" = 1'-0"
99	099	GENERAL NOTES	1/8" = 1'-0"	99	099	GENERAL NOTES	1/8" = 1'-0"	99	099	GENERAL NOTES	1/8" = 1'-0"
100	100	GENERAL NOTES	1/8" = 1'-0"	100	100	GENERAL NOTES	1/8" = 1'-0"	100	100	GENERAL NOTES	1/8" = 1'-0"

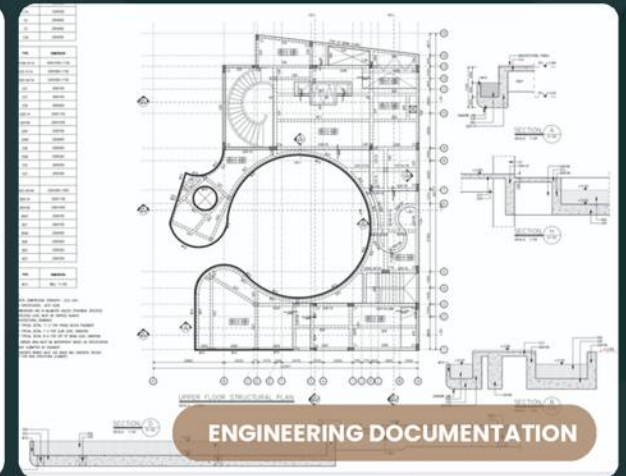
ARCHITECTURE DOCUMENTATION



LANDSCAPING + GROUND DOCUMENTATION



INTERIOR DESIGN DOCUMENTATION



ENGINEERING DOCUMENTATION

BIDDING

During bidding, we assist the client in selecting the right contractor by issuing documents, responding to questions, and evaluating proposals. Our role is to clarify scope, compare bids fairly, and negotiate terms to secure the best value. By guiding this process, we protect the integrity of the design and align contractor selection with the client's goals, budget, and timeline before construction officially begins.

- ISSUED BID PACKAGE WITH DRAWINGS AND SPECIFICATIONS

- RESPONSES TO CONTRACTOR QUESTIONS AND RFIS DURING BIDDING

- BID COMPARISON AND EVALUATION REPORT

- NEGOTIATION SUPPORT TO ALIGN CONTRACT TERMS WITH BUDGET AND SCOPE

- FINAL CONTRACTOR RECOMMENDATION AND AWARD DOCUMENTATION

CA

Once construction begins, we remain actively involved to ensure the project is executed as designed. This includes site visits, reviewing submittals, responding to contractor inquiries, and issuing clarifications as needed. We monitor progress against drawings, quality standards, and schedule. By representing the client's interests throughout construction, we provide assurance that the built result meets the agreed vision, functional goals, and overall design intent.

- PERIODIC SITE OBSERVATION REPORTS WITH PHOTOS AND DESIGN NOTES

- REVIEW AND COMMENT ON SUBMITTALS, MATERIAL SAMPLES, AND SHOP DRAWINGS

- RESPONSES TO CONTRACTOR RFIS AND DESIGN CLARIFICATIONS

- ATTENDANCE AT KEY COORDINATION AND PROGRESS MEETINGS

- EVALUATION OF PROPOSED CHANGES AND DESIGN-RELATED VARIATION RECOMMENDATIONS

- FINAL PUNCH LIST AND VERIFICATION OF DESIGN COMPLIANCE BEFORE HANDOVER

THE DESIGN JOURNEY



**DOWN
PAYMENT**

Upon Signing



**SCHEMATIC
DESIGN**

4-6 weeks



**DESIGN
DEVELOPMENT**

6-8 weeks



**DESIGN
DOCUMENTATION**

8-10 weeks

An aerial, black-and-white photograph showing a large building under construction in a tropical environment. The building has a complex, multi-level structure with visible steel reinforcement and concrete frames. It is surrounded by dense tropical vegetation, including numerous palm trees. In the background, there are rectangular plots of land, possibly agricultural fields or parking lots. A river or canal is visible in the bottom right corner. The text "BUILD SERVICE" is overlaid in a large, white, serif font across the center of the image.

BUILD SERVICE



OUR BALI CONSTRUCTION SERVICES

NSG is your Bali Construction Contractor providing for luxury Residences, Hospitality, and multi-unit Developments

Our Advantage

On Time
Delivery

On Budget
Control

Quality
Workmanship

Less
Stress

Local Know
How Proven
Methods

Transparency

Bali Construction

- Preliminaries
- Site Work
- Infrastructure
- Building Construction
- Hard + Soft Scape
- Fit Out

Construction Project Management

- Drawings
- Costing
- Schedule
- Quality
- Administration
- Handover





General Contractor in Bali

- Tender
- Contracts
- Procurement
- Costing
- Planning
- Logistics



OUR DELIVERY

Our delivery process ensures that every project, from luxury villas to boutique resorts and multi-unit developments, moves seamlessly from vision to reality. We combine international standards with local expertise to manage each stage of design and construction with precision. By aligning documentation, pricing, and execution, we provide our clients with transparency, predictable timelines, and confidence that their investment will achieve the desired outcome.

-  **SITE PREP**
-  **STRUCTURAL**
-  **ARCHITECTURAL**
-  **MEP**
-  **DETAILING**

SITE PREP

Before construction begins, we ensure the site is fully prepared for efficient and safe operations. This stage aligns logistics, access, and safety so the build can start without delays or risk.

CLEARING AND GRADING

SITE LEVELING

ACCESS ROUTES

UTILITY SETUP

TEMPORARY FACILITIES

SAFETY MEASURES

EQUIPMENT MOBILIZATION



STRUCTURAL

The structural phase establishes the core strength of your project. From foundations to framing, this stage ensures durability, compliance, and long-term performance.

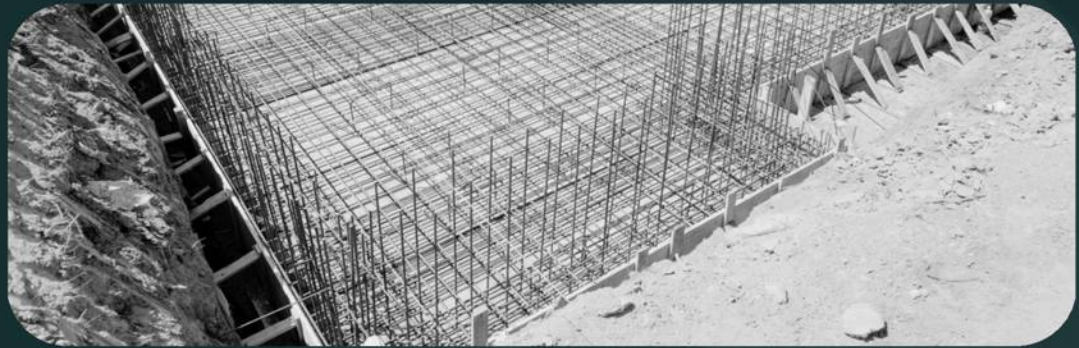
FOUNDATIONS

SUBSTRUCTURE WORKS

SUPERSTRUCTURE ERECTION

**REINFORCEMENT AND
CONCRETE**

LOAD-BEARING SYSTEMS



ARCHITECTURAL

Architectural works bring the design to life. Walls, roofing, and finishes are executed with precision to translate intent into a seamless built form.

WALL CONSTRUCTION

PARTITIONS

ROOFING SYSTEMS

INSULATION

GLAZING

PLASTERING

FINISHING LAYERS



MEP

Mechanical, electrical, and plumbing systems are integrated to guarantee functionality, comfort, and efficiency. Coordination ensures smooth alignment with the build phases.

ELECTRICAL WIRING

DISTRIBUTION SYSTEMS

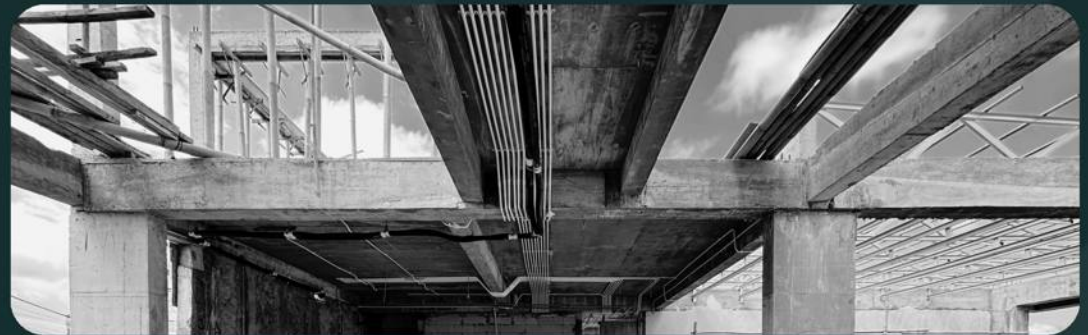
PLUMBING

WATER MANAGEMENT

MECHANICAL SYSTEMS

AC INSTALLATION

SMART/ECO INTEGRATIONS



DETAILING

Final detailing covers the refinement, coordination, and verification of all elements required to prepare the project for handover. This stage ensures that every component is installed, tested, documented, and aligned with design intent and construction standards. Through thorough inspections, as-built documentation, commissioning, and FF&E preparation, we confirm that the project is fully operational, compliant, and ready for client use.

FF & E

TESTING & COMMISSIONING

**AS-BUILT DOCUMENTATION &
DRAWINGS**

**QUALITY ASSURANCE &
COMPLIANCE CHECK**

HARD & SOFT SCAPE

**TRAINING FOR OPERATIONS /
MAINTENANCE**

**HANDOVER INSPECTION
WITH CLIENT**



OUR BALI BUILDING PROCESS



INITIAL CONSULTATION

Step 1



CONTRACTS + AGREEMENTS

Step 2



PRE-CONSTRUCTION PLANNING

Step 3



CONSTRUCTION EXECUTION

Step 4



HAND OVER + CLOSE-OUT

Step 5

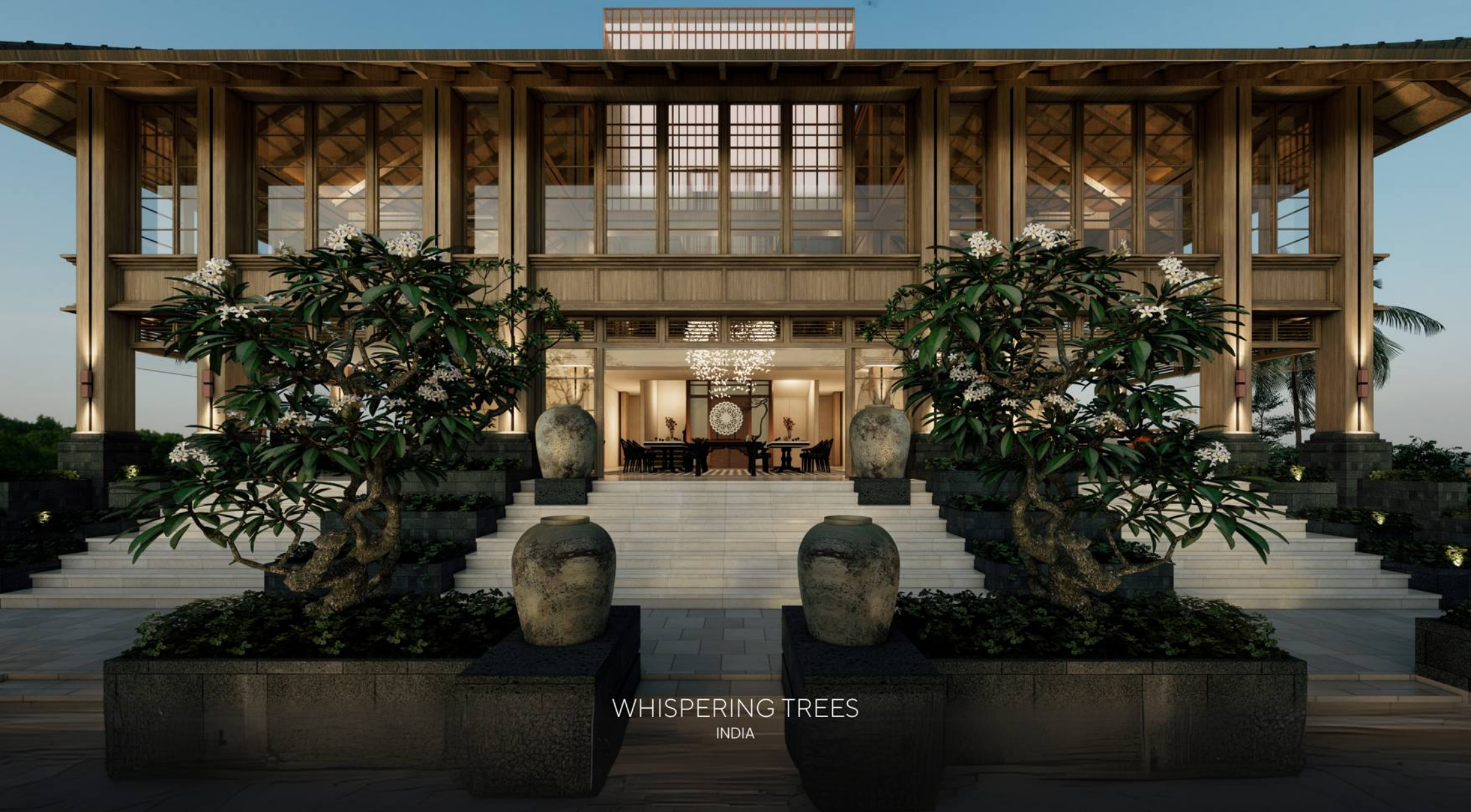
How we work

Our delivery follows four disciplined stages; Pre-Construction, Construction, Manage, and Close-Out, each with straightforward responsibilities, consistent updates, and clean documentation. The result is work completed on time, as designed, and ready for use.





PORTFOLIO



WHISPERING TREES
INDIA



WHISPERING TREES

Spanning an impressive 21,498 sqm near Goa's iconic Anjuna Beach, this expansive luxury resort is a masterstroke of tropical architecture. NSG Design and Build led the planning and design - bringing to life a refined, nature-inspired sanctuary that blends premium design with serene coastal beauty.

COMPANY ROLE

Planning | Design



KUTA BEACH RESORT
BALI



KUTA BEACH RESORT

Luxury unfolds across this 5,477 m² beachfront site in Kuta, where a 6,859 m² resort offers 60 standard and 6 suite rooms. NSG Design and Build led the planning, design, and project management, delivering tropical sophistication through thoughtful architecture.

COMPANY ROLE

Planning | Design | Construction Administration





OKTAV
BALI

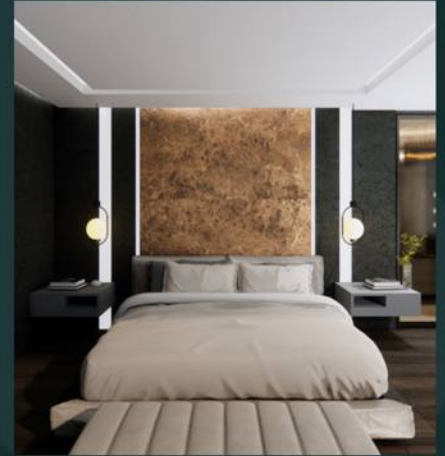


OKTAV

Exceptional from every angle, this 1,000 m² cliffside haven in Ungasan captures the essence of oceanfront tranquillity. NSG Design and Build shaped its vision - designing twin villas where bold architecture and coastal elegance converge above Melasti Beach.

COMPANY ROLE

Planning | Design | Project Management





SVARNA
INDIA



SVARNA

Rooted in sacred balance and elevated design, this tranquil villa sanctuary reflects Dewi Sri's principles through refined tropical architecture. NSG Design and Build led the planning and design, crafting elegance and serenity - set on a jungle-adjacent site of 3,080 m².

COMPANY ROLE

Planning | Design



AURA
INDIA



AURA

Architecturally shaped to echo its natural contours, this refined retreat unfolds across 3,080 m² in Goa's lush highlands. With four 420 m² lots, NSG Design and Build led the planning and design, fusing jungle calm with elevated tropical living.

COMPANY ROLE

Planning | Design





DEEP ROOTS
NUSA PENIDA



DEEP ROOTS

We take immense pride in crafting every detail. From blending modern and traditional Balinese architecture to creating unforgettable experiences, we've brought this serene, oceanfront retreat to life.

COMPANY ROLE
General Contractor





NACHINOLE
INDIA



NACHINOLE

"To shape a new way of living, one that is spacious, soulful, and deeply connected to nature. Through the elegance of open design, the warmth of Indian culture, and the charm of Portuguese heritage, we envision a forest-X sanctuary where light flows freely, space inspires serenity, and every home becomes a timeless expression of refined living."

COMPANY ROLE

Planning | Design



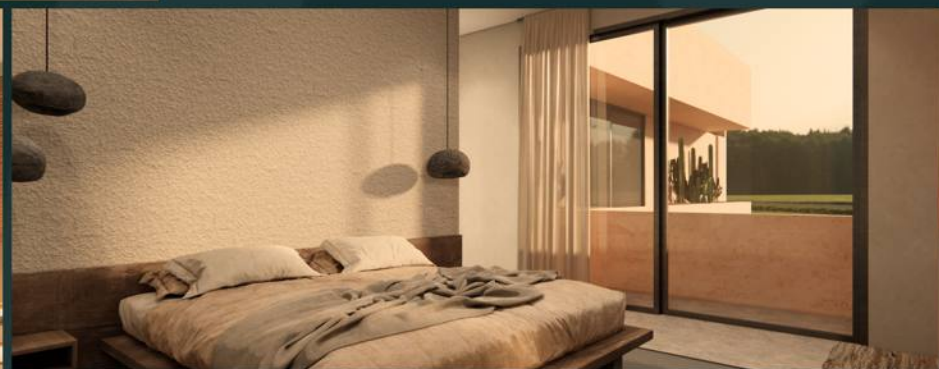
HAVANA
BALI



HAVANA

Sanctuary meets sculpture in this 560 m² villa near Garuda Wisnu Kencana - where NSG Design and Build Planning & Design merges bold geometry, warm textures, and natural light into a space of lasting serenity.

COMPANY ROLE
Planning | Design





NALU VILLAGE
BALI

NALU VILLAGE

COMPANY ROLE

Planning | Design | Development

Every detail of the NALU Village is designed to provide an exceptional guest experience. From the thoughtful integration of indoor and outdoor spaces to the high-quality finishes and furnishings, each villa offers a perfect retreat for those seeking a memorable and low-key luxury stay in Bali. The development fosters a sense of community while ensuring privacy and exclusivity for all guests. Low key luxury in design emphasises understatement, allowing the materials and textures to take center stage.





CASA TIERRA
BALI

CASA TIERRA

Architecture shaped for tropical living - this 585 m² residence near Nyanyi Beach and Nuanu Creative City brings together soft curves, sunlit flow, and NSG Design and Build signature planning and design precision.

COMPANY ROLE

Planning | Design





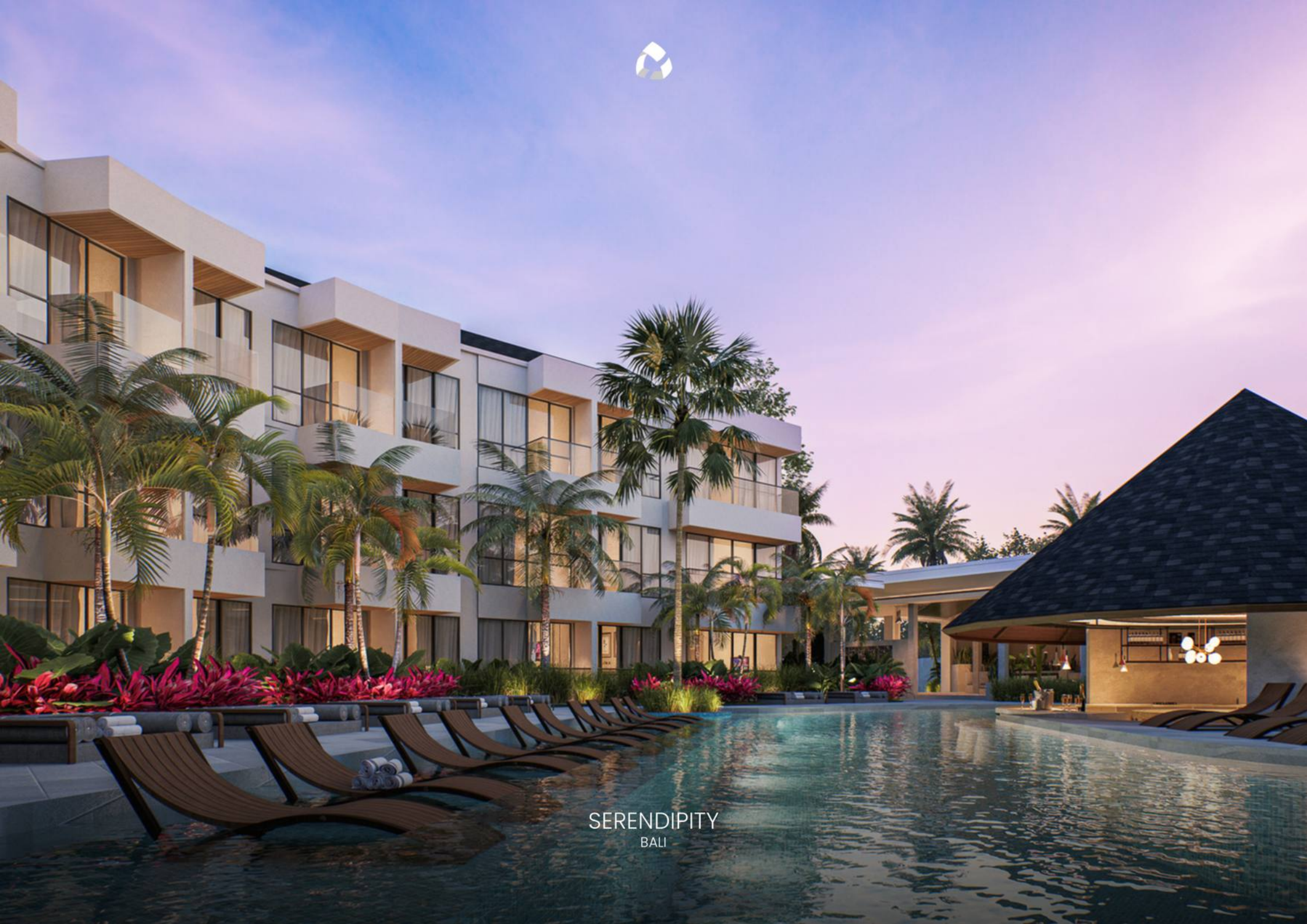
WAVES
INDIA



WAVES

Located near Candolim Beach, this 462 m² private villa showcases bespoke design by NSG Design and Build - where premium materials, tropical elegance, and spatial harmony deliver a luxurious coastal living experience.

COMPANY ROLE
Planning | Design



SERENDIPITY
BALI



SERENDIPITY

Contemporary resort living reimagined. Clean lines, lush landscaping, and dynamic poolside design evoke an energising yet laid-back atmosphere, perfect for modern travellers seeking comfort with character.

COMPANY ROLE
Planning | Design | Project
Management



VILLA INDAH
LOMBOK



VILLA INDAH

This modern pavilion villa showcases a refined tropical architectural concept, merging wide rooflines, open living spaces, and natural materials. The design emphasizes seamless indoor-outdoor flow, integrating a central pool, landscaped gardens, and expansive glass openings. Its balance of simplicity and precision highlights luxury living with architectural clarity and timeless elegance

COMPANY ROLE

Planning | Design



FIELDS OF SERENITY
GOA



FIELD OF SERENITY

Private design meets exceptional architecture in this 602.7 m² Goa residence – crafted by NSG to offer a harmonious blend of elegant interiors and lush countryside living.

COMPANY ROLE
Design





ZENScape MANOR
GOA



ZENSCAPE MANOR

Defined by bold geometry and premium design, this 1,200 m² Salgao Plateau residence by NSG Design and Build balances dramatic elevation with architectural finesse –framing sweeping city views in a sculptural, luxurious form.

COMPANY ROLE
Design



ARYAS
GOA



ARYAS

Sculptural forms rise near Candolim Beach, where NSG Design and Build crafted a 1,000 m² hillside escape that blends resort-style ease with expressive architecture - uniting light, space, and nature into a premium tropical retreat.

COMPANY ROLE
Planning | Design





HESTIA
BALI



HESTIA

Smart luxury villas designed for modern tropical living rise in Seminyak, where NSG Design and Build shaped 1,279 m² of built space across a 1,117 m² site - balancing innovation, privacy, and nature through an integrated role from development to execution.

COMPANY ROLE

Design | Build | Development



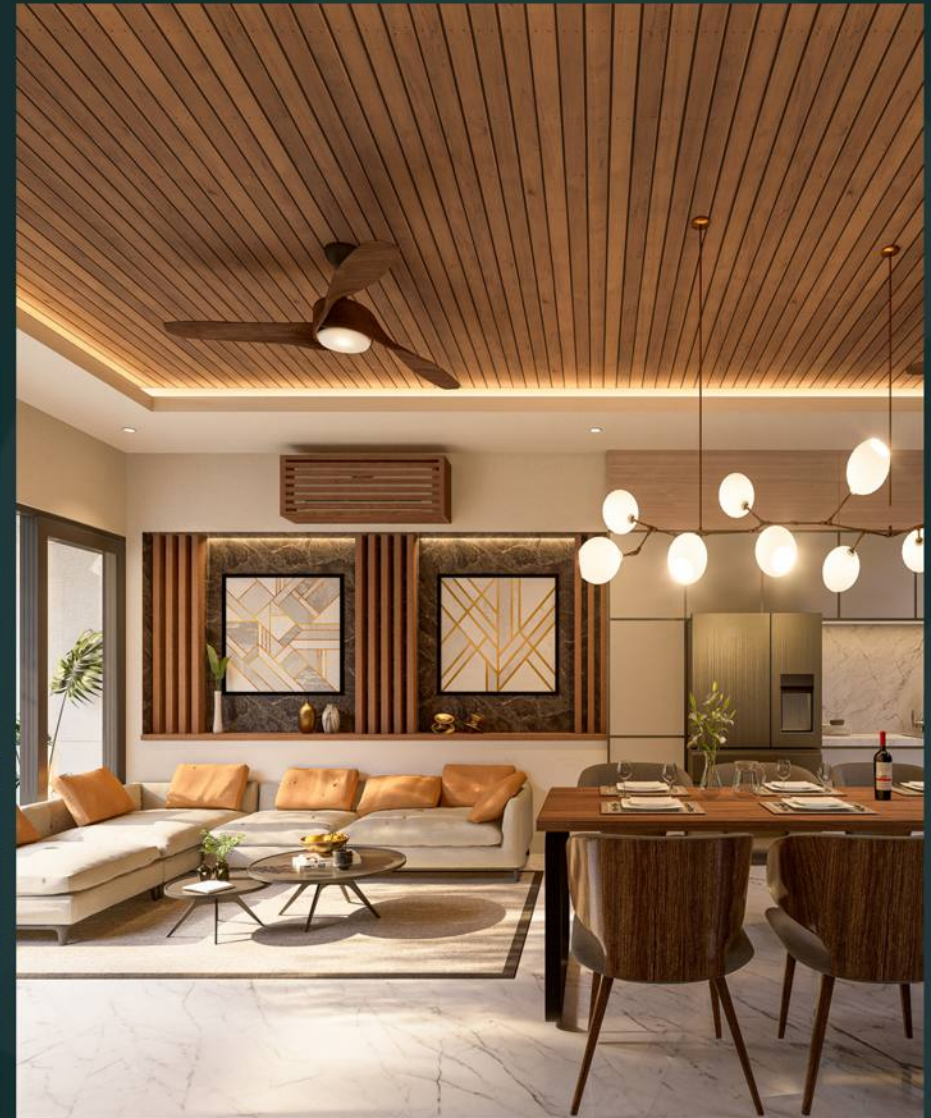
AYA TOWNHOUSE
BALI

AYA TOWNHOUSE

A bold expression of modern tropical living – this villa showcases fluid, curved architecture wrapped in warm timber and lush vertical greenery. Each unit is meticulously angled to provide privacy, natural ventilation, and seamless indoor-outdoor flow. With minimalist lines and sculptural form, it's a rhythmic play of light, shadow, and sustainable design.

COMPANY ROLE

Planning | Design | Project Management





THE LOTUS
INDIA



THE LOTUS

A sculptural retreat near Anjuna Beach, this 208 m² three-storey villa embraces refined coastal living. Planned and designed by NSG Design and Build, it balances artisanal texture, cultural layers, and modern simplicity - delivering a tranquil, elevated home with four serene bedrooms.

COMPANY ROLE
Planning | Design





TIDAL VILLA
BALI



TIDAL VILLA

A duplex twin villa designed with a Tropical Balinese concept, bringing harmony between nature and modern comfort. Located in Pecatu, South Kuta, Bali, the project consists of two identical units that blend wood, natural stone, and lush tropical vegetation to create a warm and serene atmosphere both in the exterior and interior spaces.

COMPANY ROLE
Planning | Design | Build



SOLACE
LOMBOK



SOLACE

A tranquil Eden near Kuta Beach and Mandalika Circuit, this 717 m² sanctuary is a celebration of biophilic design and barefoot luxury. With NSG Design and Build leading the planning and design, every detail embraces sculpted serenity and elevated tropical living.

COMPANY ROLE
Planning | Design



PILERNE
GOA

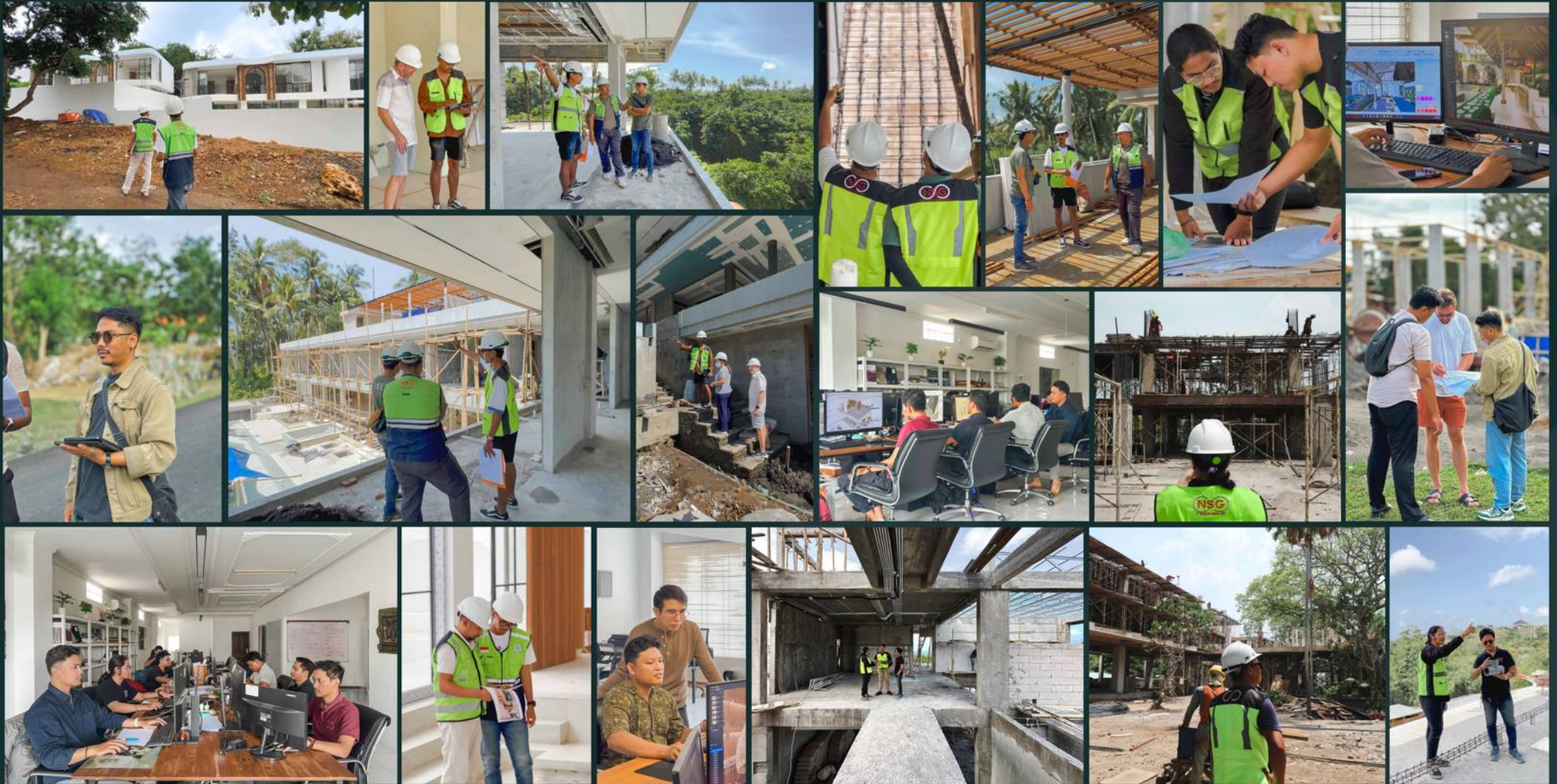


PILERNE

20-villa estate nestled in Goa's tranquil highlands, featuring 15 standard and 5 premium residences, this 5,777 m² development was designed by NSG Design and Build to harmonise luxury, privacy, and nature in enduring architectural form.

COMPANY ROLE
Planning | Design





Bali Based Design And Build Expert

OUR PROCESS

INITIAL CONVERSATION

A short, open dialogue to understand your needs, timeline, and aspirations. No obligations. Just clarity.

PROJECT DISCOVERY

We gather essential inputs, site info, references, goals and share how our studio can uniquely respond to your brief.

PROPOSAL + PATH FORWARD

You receive a tailored design proposal with timeline, scope, and next steps. If it aligns, we begin.

START YOUR PROJECT

Project Launch with Team, schedule, budget and scope of work all planned and ready to realize success.

CONTACT US



CONTACT US



contact@ptnsg.com



+62 822 3085 0070



www.ptnsg.com



[ptnsg](https://www.instagram.com/ptnsg)